

# **HUSQVARNA - SPARE PARTS CATALOGUE**

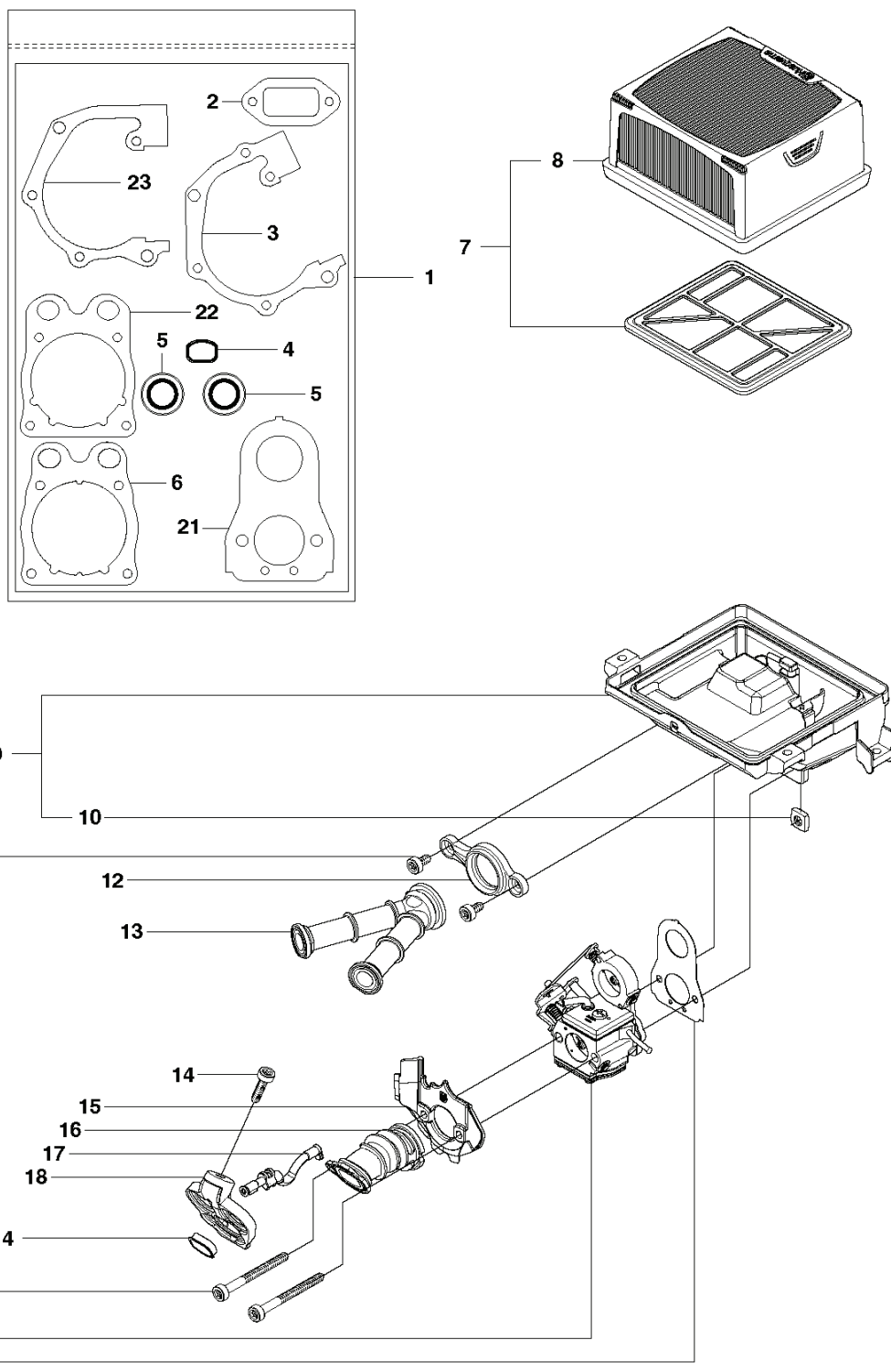
## **: HUSQVARNA K 770 OILGUARD**

Spare parts list

---

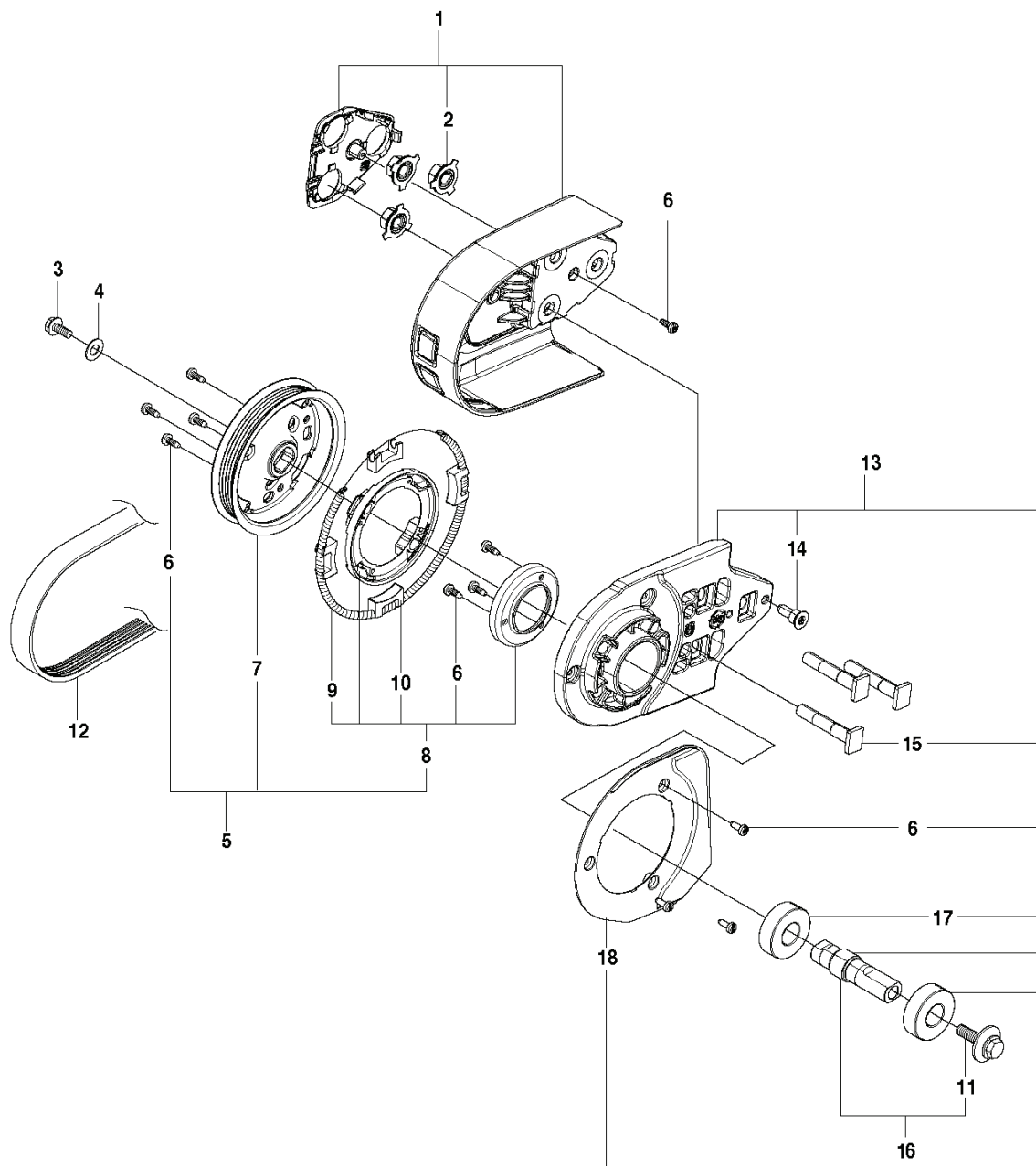
# **SPARE PARTS LIST**

# **A** K770 AIR FILTER



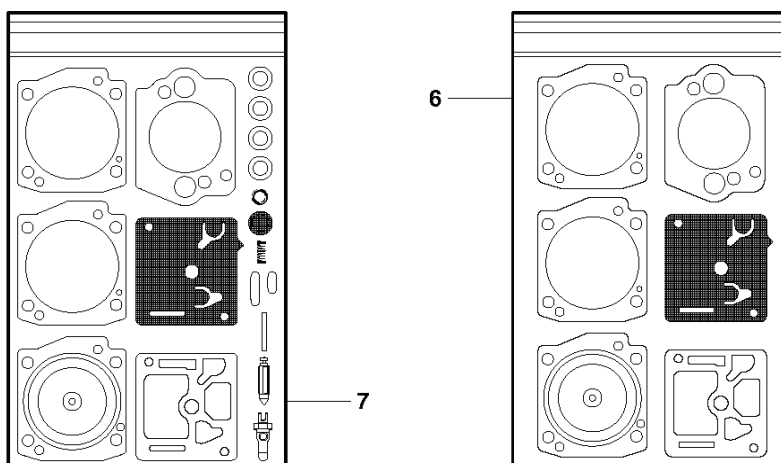
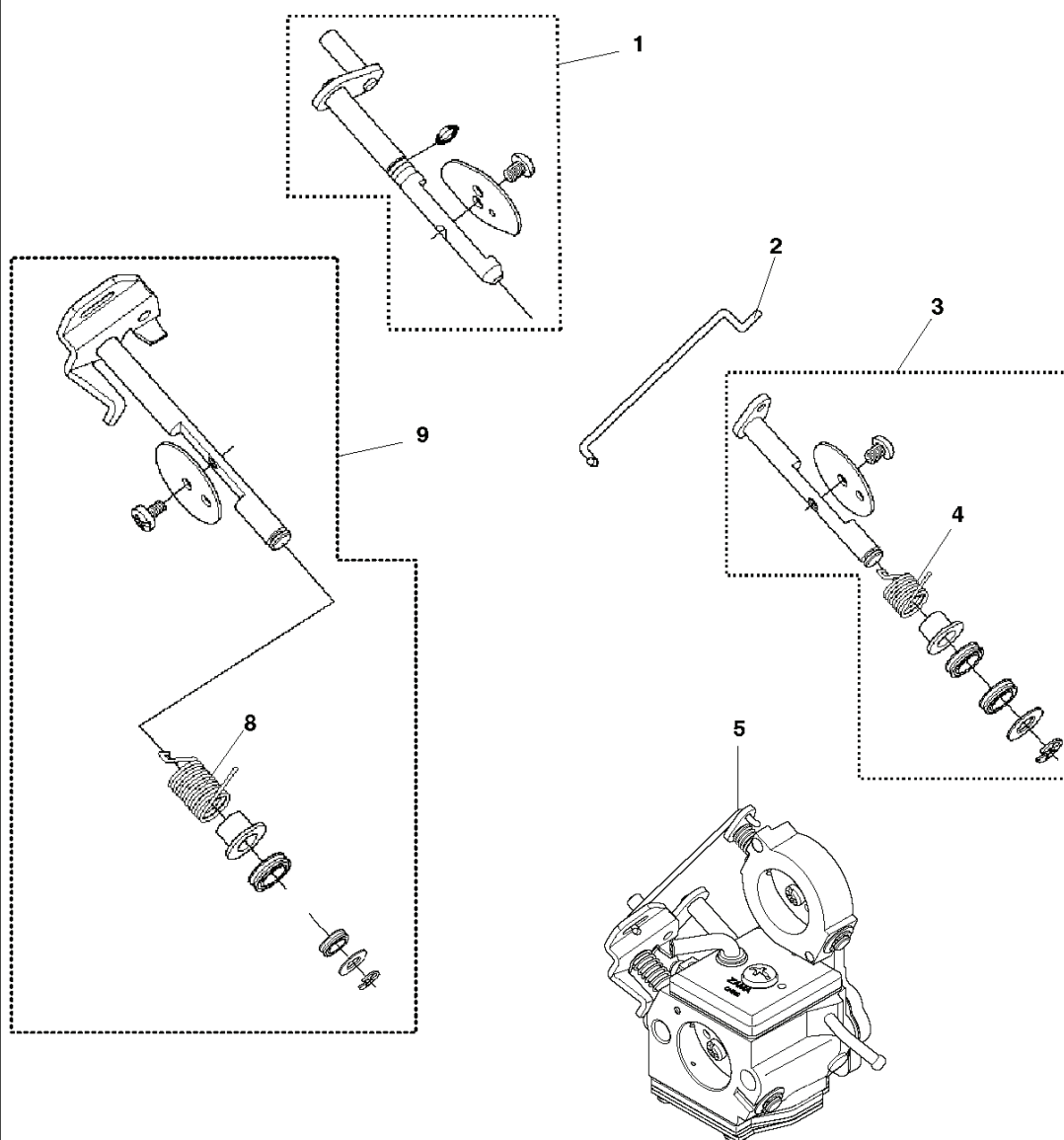
PXM_REF	PXM_PARTNO	DESCRIPTION	PXM_REMARK	QTY.	
1	581357402	GASKET KIT	incl. 2 - 6, 21 - 23	1	2, 23, 3, 22, 5, 4, 6, 21
2	588932501	GASKET		1	1
3	506377003	GASKET		1	1
4	544219302	INSERT		1	1
5	503260204	SEALING RING	Blue	2	1
6	581285301	GASKET		1	1
7	574362302	AIR FILTER ASSY	Incl. 8	1	8
8	525470602	AIR FILTER ASSY		1	7
9	575354001	CARBURETTOR BRACKET	Incl. 10	1	10
10	581774801	NUT		4	9
11	503215310	SCREW ITXSCM		2	
12	506370601	FLANGE INLET PIPE		1	
13	525733201	INLET PIPE		1	
14	503215320	SCREW ITXSCM		1	
15	576890101	HEAT SHIELD		1	
16	525733101	INLET PIPE		1	
17	586227701	IMPULSE HOSE		1	
18	574231802	PLATE		1	
19	503215356	SCREW ITXSCM		2	
20	578243401	CARBURETTOR	Zama C3-EL53	1	
21	506376804	GASKET		1	1
22	506376701	GASKET		1	1
23	506377002	GASKET		1	1

**C** K770  
BELT GUARD & PULLEY



PXM_REF	PXM_PARTNO	DESCRIPTION	PXM_REMARK	QTY.	
1	501057103	BELT GUARD		1	2
2	586743701	NUT WASHER		3	1
3	503200045	SCREW EHIHFH		1	
4	503230116	WASHER		1	
5	588470403	PULLEY ASSY		1	6.7. 8
6	525887402	SCREW CITXPANT		11	
7	590895801	PULLEY		1	
8	505445405	CASSETTE		1	
9	544441001	DRAW SPRING		1	
10	544440402	BRAKE SHOE		4	
11	590503801	SCREW		1	
12	544908406	BELT		1	
13	588992003	BEARING HOUSING ASSY		1	6. 11. 13. 14. 15. 16. 17. 18
14	584994301	SCREW		1	
15	503875402	BAR BOLT		3	
16	588992403	SHAFT		1	
17	583953301	BALL BEARING		2	
18	586801002	SLIP RING HOLDER		1	

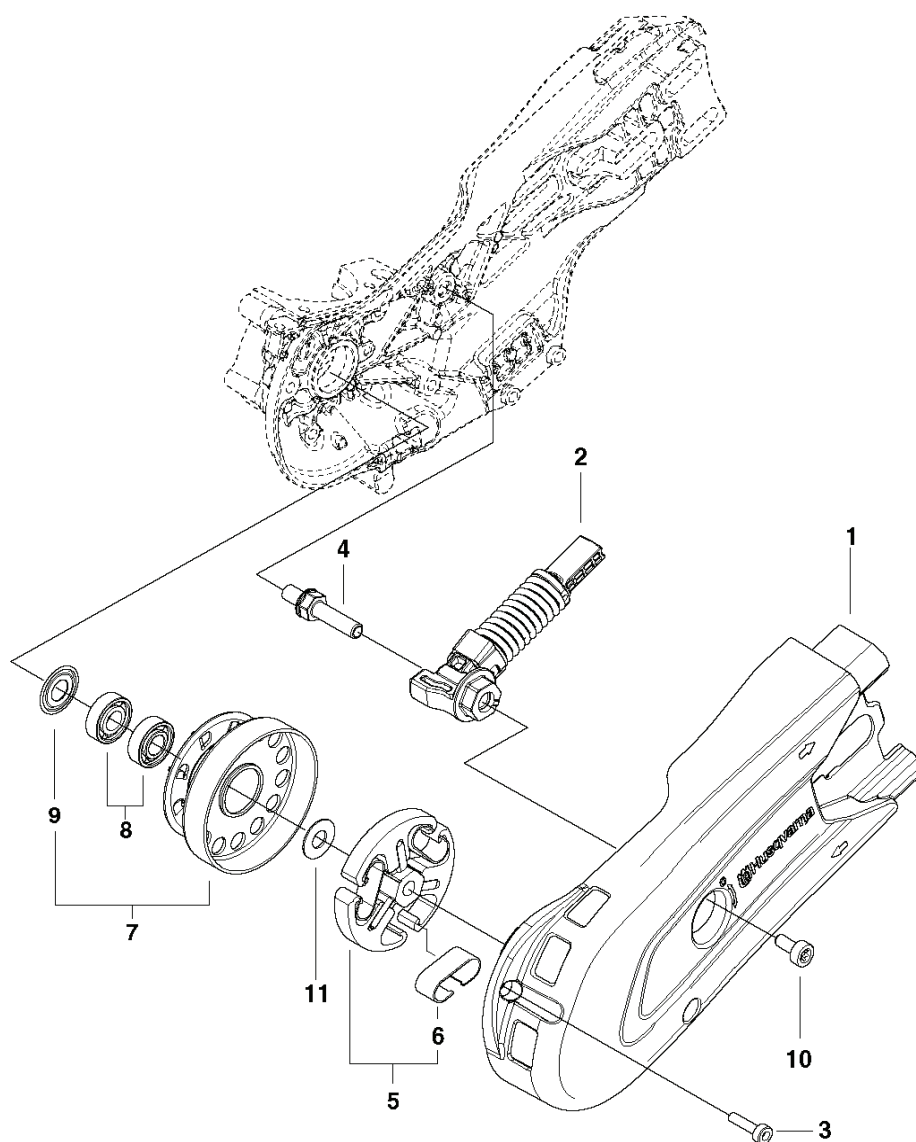
**D** K770  
CARBURETTOR



PXM_REF	PXM_PARTNO	DESCRIPTION	PXM_REMARK	QTY.
1	593310001	CHOKE SHAFT	Excl Japan	1
2	506396501	ROD		1
3	593332901	VALVE KIT		1
4	506397501	SPRING		1
5	578243401	CARBURETTOR	Zama C3-EL53	1
5	596875601	CARBURETTOR	Japan Only	1
6	506409902	GASKET KIT		1
7	506410004	GASKET KIT		1
8	544836501	SPRING		1
9	593309901	THROTTLE SHAFT		1

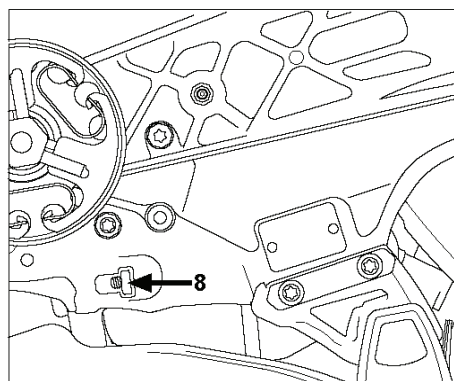
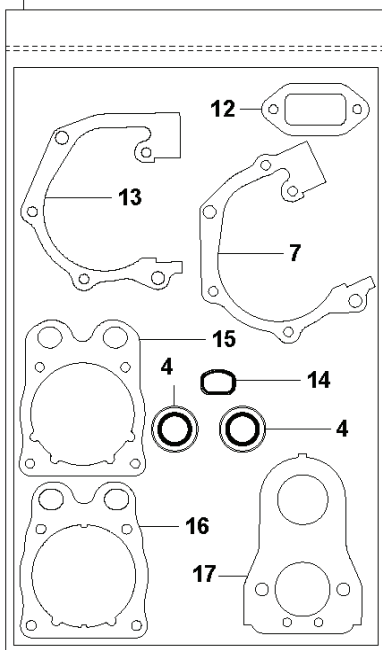
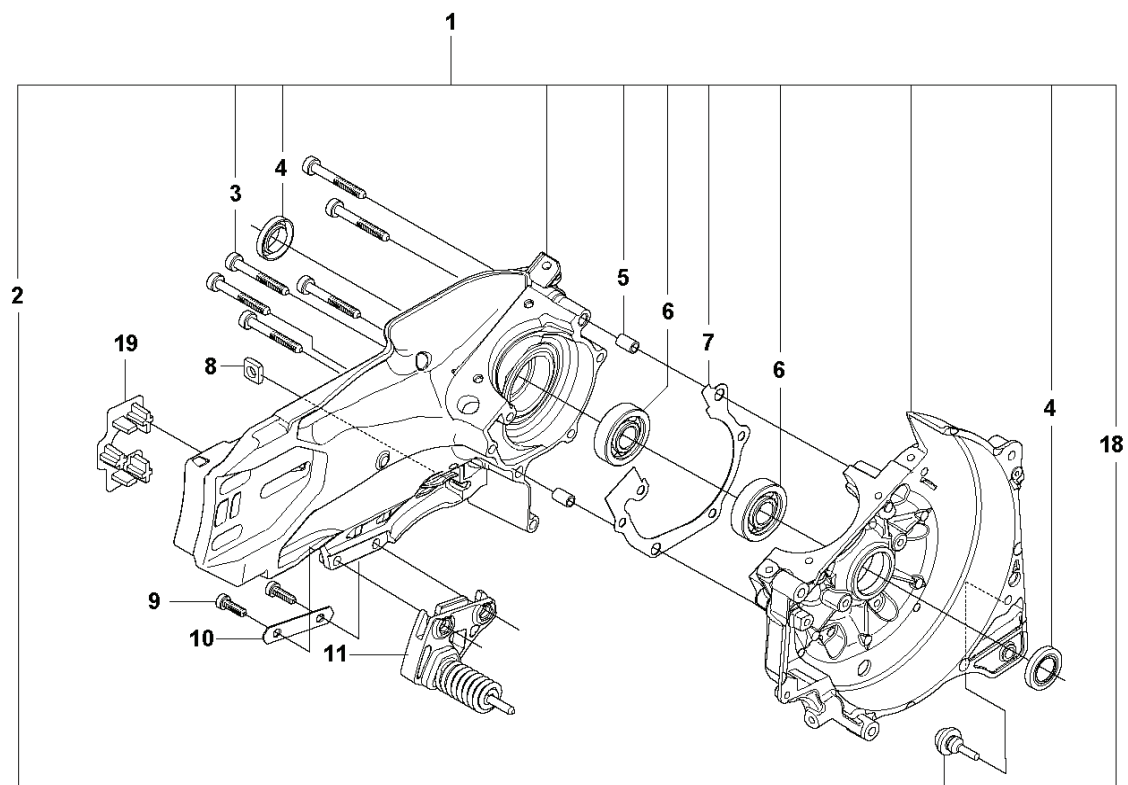


**G** K770  
CLUTCH



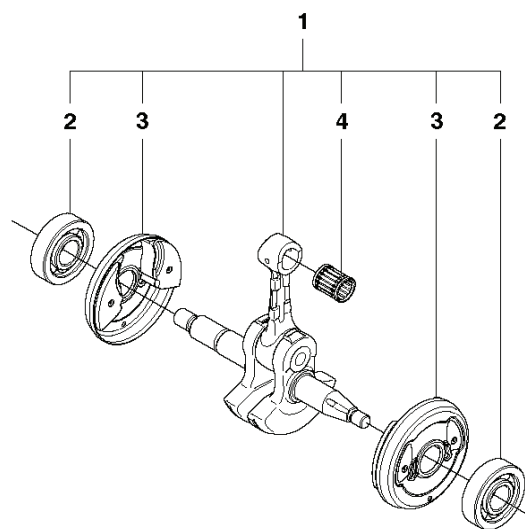
PXM_REF	PXM_PARTNO	DESCRIPTION	PXM_REMARK	QTY.
1	586099201	BELT GUARD		1
2	583842201	BELT TENSIONER ASSY		1
3	501981020	SCREW ITXSCM		2
4	583851601	PIVOT PIN		1
5	503744406	CLUTCH ASSY		1
6	503744301	CLUTCH SPRING		3
7	590805901	DRIVING PULLEY		1
8	525831801	BALL BEARING		2
9	506316901	DUST COVER		1
10	501981001	SCREW ITXSCM		1
11	503230070	WASHER		1

# E K770 CRANKCASE



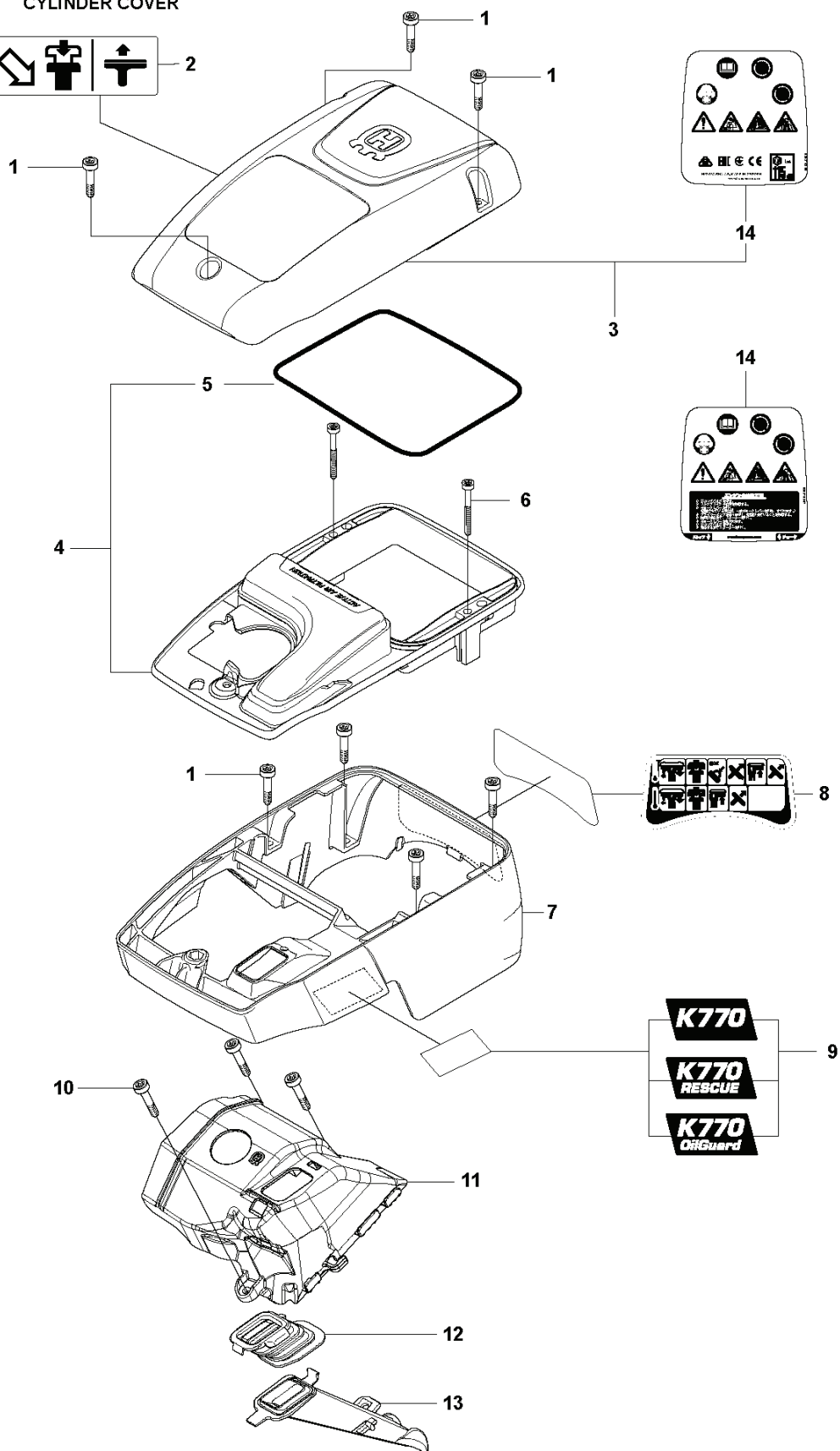
PXM_REF	PXM_PARTNO	DESCRIPTION	PXM_REMARK	QTY.	
1	593282504	CRANKCASE KIT	Incl. 2-7, 18	1	
2	581357402	GASKET KIT	4, 7, 12-17	1	1
3	503215341	SCREW ITXSCM		6	1
4	503260204	SEALING RING		2	1
5	593806001	GUIDE BUSHING		2	1
6	738220225	BALL BEARING		2	1
7	506377003	GASKET	Six hole	1	1
8	503226504	SQUARE NUT		1	
9	503215316	SCREW ITXSCM		2	1
10	522474801	PLATE		1	1
11	598586902	SPRING RETAINER		1	1
12	588932501	GASKET		1	
13	506377002	GASKET	Five hole	1	
15	506376701	GASKET		1	
14	544219302	INSERT		1	
16	581285301	GASKET		1	
17	506376804	GASKET		1	
18	503846101	BUFFER		1	1
19	586760901	RUBBER SHOE		1	1

**F** K770  
CRANKSHAFT



PXM_REF	PXM_PARTNO	DESCRIPTION	PXM_REMARK	QTY.	
1	596423701	CRANKSHAFT KIT	Incl. 2 - 4	1	2, 3, 4
2	738220225	BALL BEARING		2	
3	537203301	CUP		2	
4	503254101	NEEDLE BEARING		1	

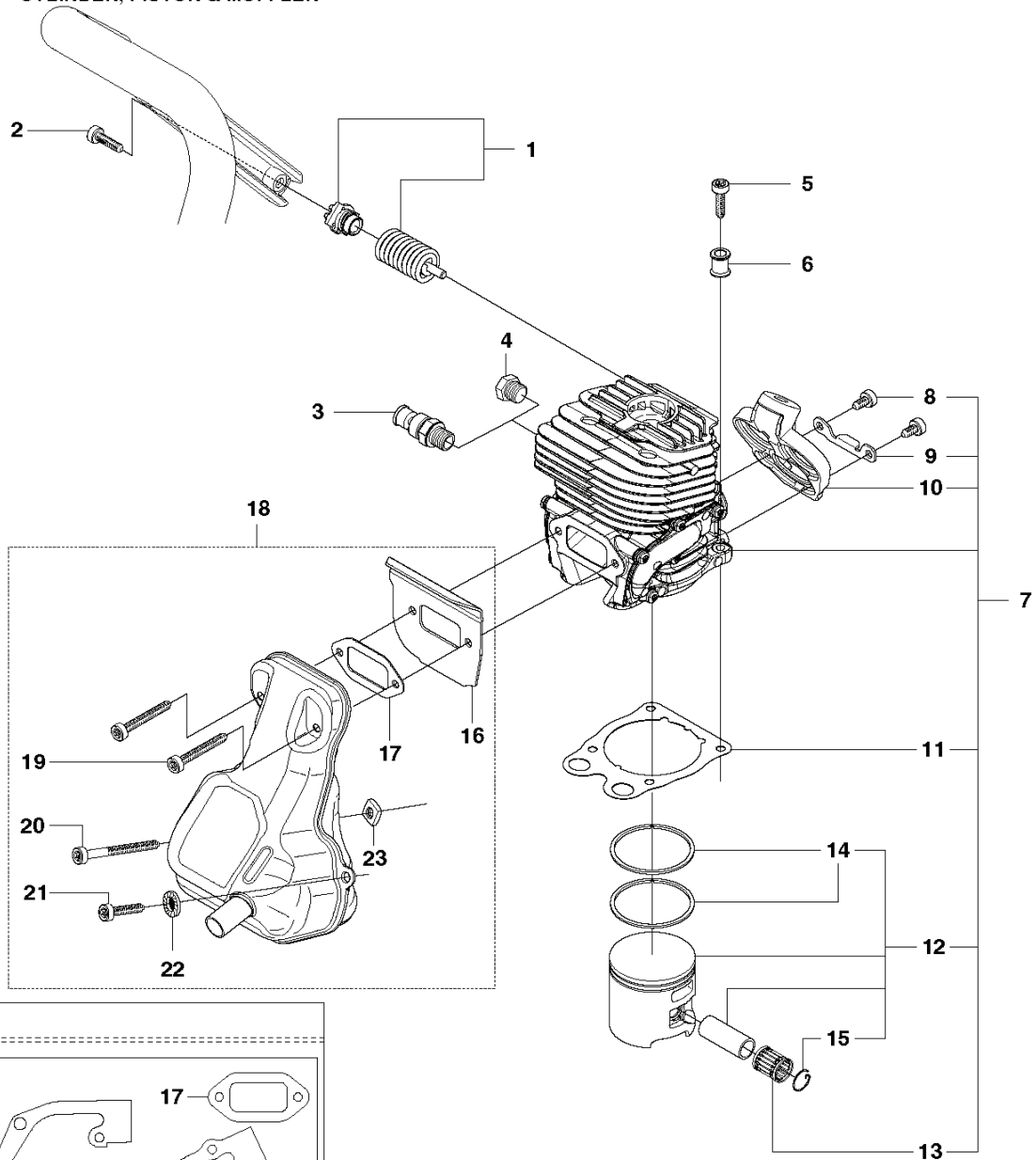
**K770  
CYLINDER COVER**



PXM_REF	PXM_PARTNO	DESCRIPTION	PXM_REMARK	QTY.
1	503215321	SCREW ITXSCM		7
2	525763502	DECAL		1
3	583965208	FILTER COVER ASSY	incl. 14	1
4	574362103	FILTER HOLDER ASSY	Incl. 5	1
4	574362104	FILTER HOLDER ASSY	Incl. 5. OIL GUARD	1
5	575355001	SEALING STRIP		1
6	503215349	SCREW ITXSCM		2
7	506367003	CYLINDER COVER		1
8	579240301	DECAL		1
9	574231605	DECAL		1
9	574231607	DECAL	Rescue	1
9	574231606	DECAL	Oil Guard	1
10	501981020	SCREW ITXSCM		3
11	574459401	COVER		1
12	587933002	BELLOWS		1
13	525584301	AIR NOZZLE		1
14	586379306	DECAL	Generic	1
14	586379307	DECAL	Japan Only	1



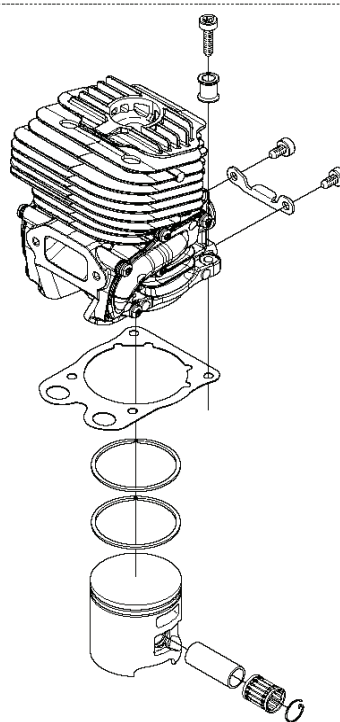
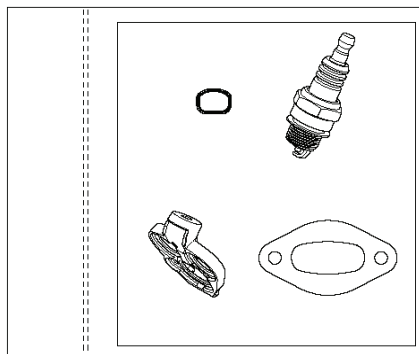
# **H** K770 CYLINDER, PISTON & MUFFLER



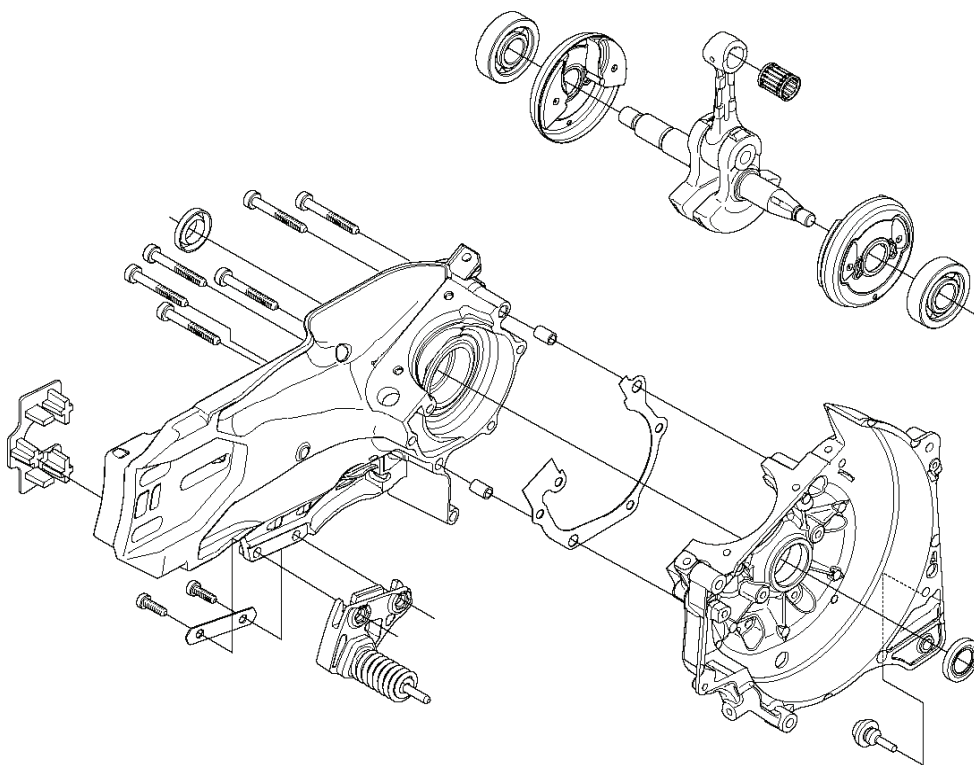
PXM_REF	PXM_PARTNO	DESCRIPTION	PXM_REMARK	QTY.
1	579744202	ANTIVIBRATION ELEMENT		1
2	544061201	SCREW ITXSCM		1
3	503715301	DECOMPRESSION VALVE		1
4	503552201	PLUG		1
5	503215340	SCREW ITXSCM		4
6	576717602	SLEEVE		4
7	581476103	CYLINDER ASSY	Incl. 8 - 13	1
8	503215316	SCREW ITXSCM		2
9	506368801	BRACKET		1
10	574231802	PLATE		1
11	581285301	GASKET		1
12	506372403	PISTON ASSY	Incl. 14 - 15	1
13	503255601	NEEDLE BEARING		1
14	522990101	PISTON RING		2
15	737431200	SNAP RING		2
16	588915101	HEAT DEFLECTOR		1
17	588932501	GASKET		1
18	592778301	MUFFLER KIT	Incl. 16 -17, 19 - 23	1
19	503215340	SCREW ITXSCM		2
20	503215356	SCREW ITXSCM		1
21	503215325	SCREW ITXSCM		1
22	503230402	WASHER		1
23	581774801	NUT		1
24	581357402	GASKET KIT	Incl. 11, 17, 25 - 30	1
25	506377003	GASKET		1
26	544219302	INSERT		1
27	503260204	SEALING RING	Blue	2
28	506376804	GASKET		1
29	506376701	GASKET		1
30	506377002	GASKET		1

**J** K770  
ENGINE KIT

1



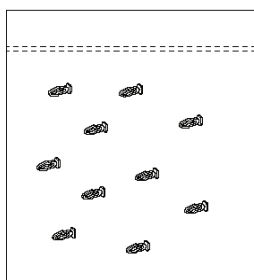
2



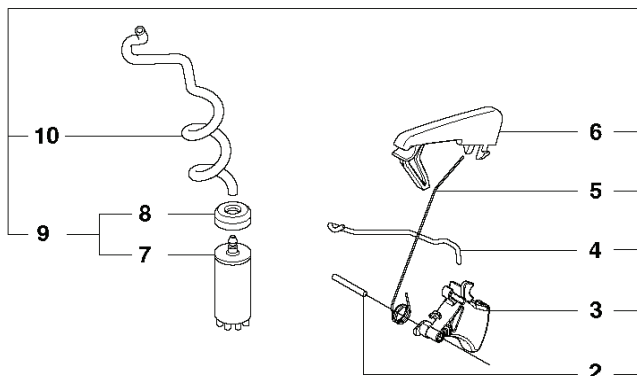
---

PXM_REF	PXM_PARTNO	DESCRIPTION	PXM_REMARK	QTY.	
1	593282503	CRANKCASE KIT		1	1
2	593282502	CRANKCASE KIT		1	

# **K** K770 FUEL TANK



11



6

5

4

3

2

12

13

14

15

16

18

19

20

21

22

23

24

25

26

27

28

29

30

31

32

33

34

35

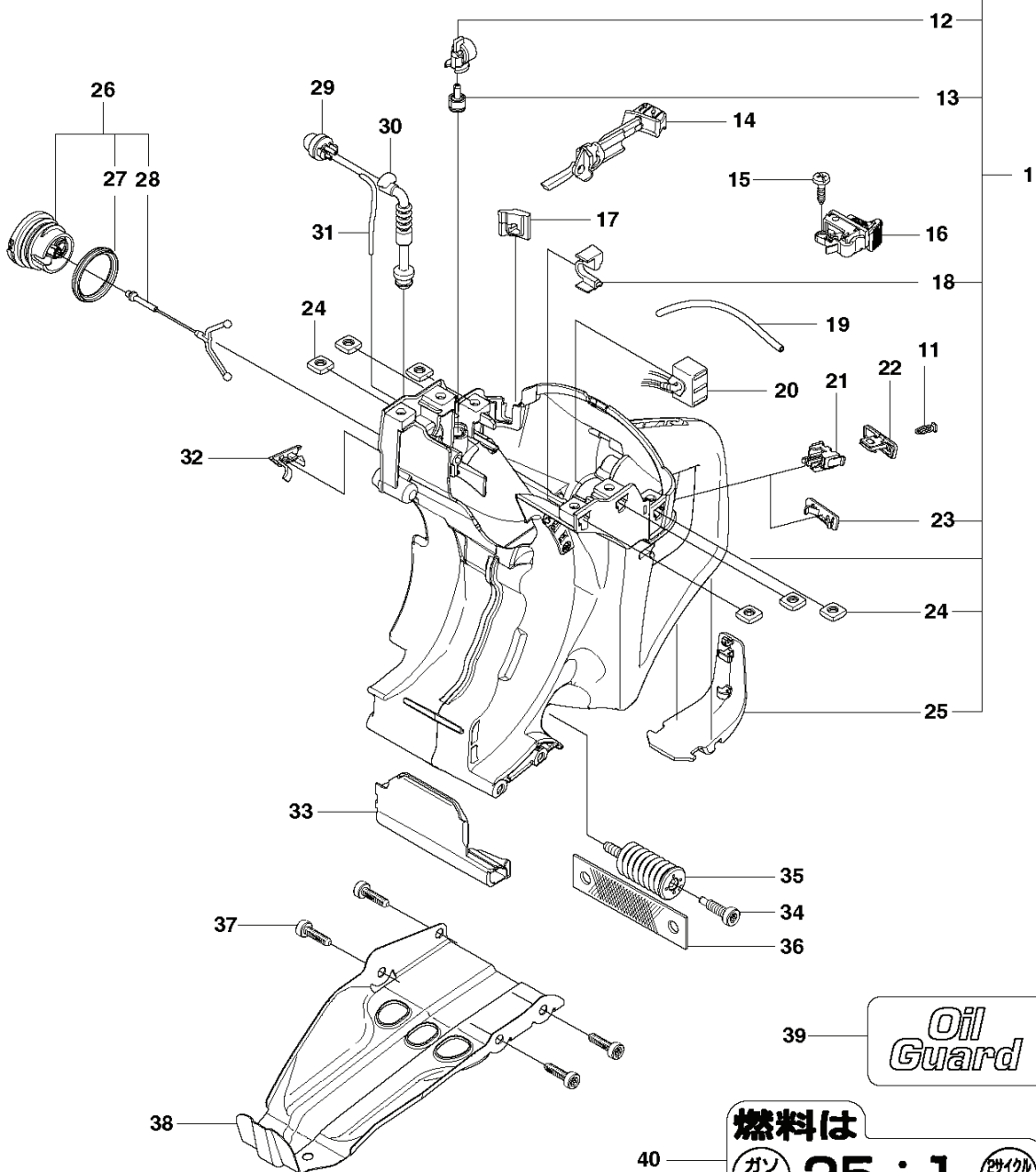
36

37

38

39

40



*Oil  
Guard*

燃料は

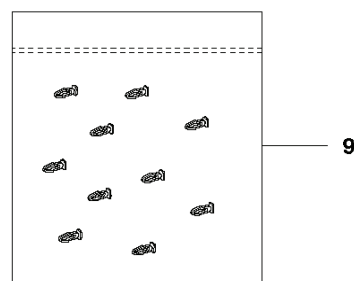
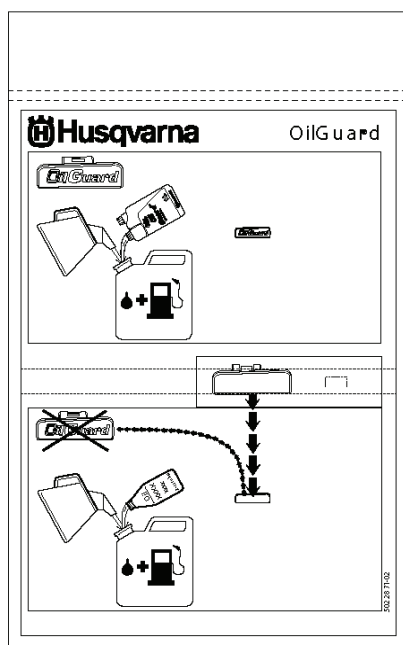
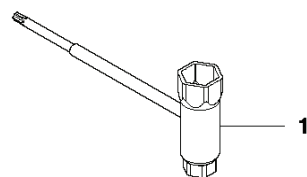
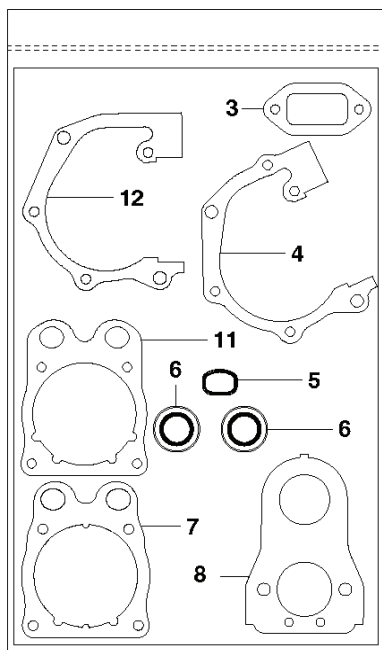
ガソリン

25 : 1

2サイクル  
専用オイル

PXM_REF	PXM_PARTNO	DESCRIPTION	PXM_REMARK	QTY.	
1	593281802	FUEL TANK ASSY	Incl. 2 - 10, 12-13, 18, 23-25	1	
2	720124020	PARALLEL PIN		2	
3	588086201	THROTTLE CONTROL		1	
4	579379201	THROTTLE ROD		1	
5	595835701	SPRING		1	
6	588137701	THROTTLE LOCKOUT		1	
7	506264101	FUEL FILTER		1	
8	506271101	HOSE CLAMP		1	
9	506264111	FUEL FILTER	Incl. 7 - 8	1	
10	581756203	FUEL HOSE		1	
10	581756202	FUEL HOSE	Oil Guard	1	
11	502233301	KIT	Oil Guard. Incl. 10 pins	1	
12	598611001	TANK VENT ASSY		1	
13	501152901	TANK VENT ASSY		1	
14	544229002	CHOKE CONTROL		1	
15	525887402	SCREW CITXPANT		1	
16	506318604	STOP SWITCH		1	
17	506378001	GROMMET		1	
18	544393201	HOSE CLIP		1	
19	581756117	FUEL HOSE		1	
20	544384102	ELECTRONIC BOX		1	
21	501018801	HOUSING		1	
22	501019401	SWITCH		1	
23	501371301	LID		1	
24	581774801	NUT		6	
25	588198201	GROUND SUPPORT		1	
26	522620003	TANK CAP ASSY		1	
27	589241101	GASKET		1	
28	503578901	HOLDER		1	
29	540054901	PURGE		1	
30	505195201	FUEL HOSE		1	
31	537042414	FUEL HOSE		1	
32	506394602	HUB CAP		1	
33	506381501	HEAT SHIELD		1	
34	544061201	SCREW ITXSCM		1	
35	537210312	ANTIVIBRATION ELEMENT		1	
36	544238201	BAND		1	
37	503215420	SCREW ITXSCT		4	
38	506371902	BASEPLATE		1	
39	581095402	DECAL	Oil Guard	1	
40	506313001	LABEL	Japan Only	1	

**L** K770  
GASKET KIT

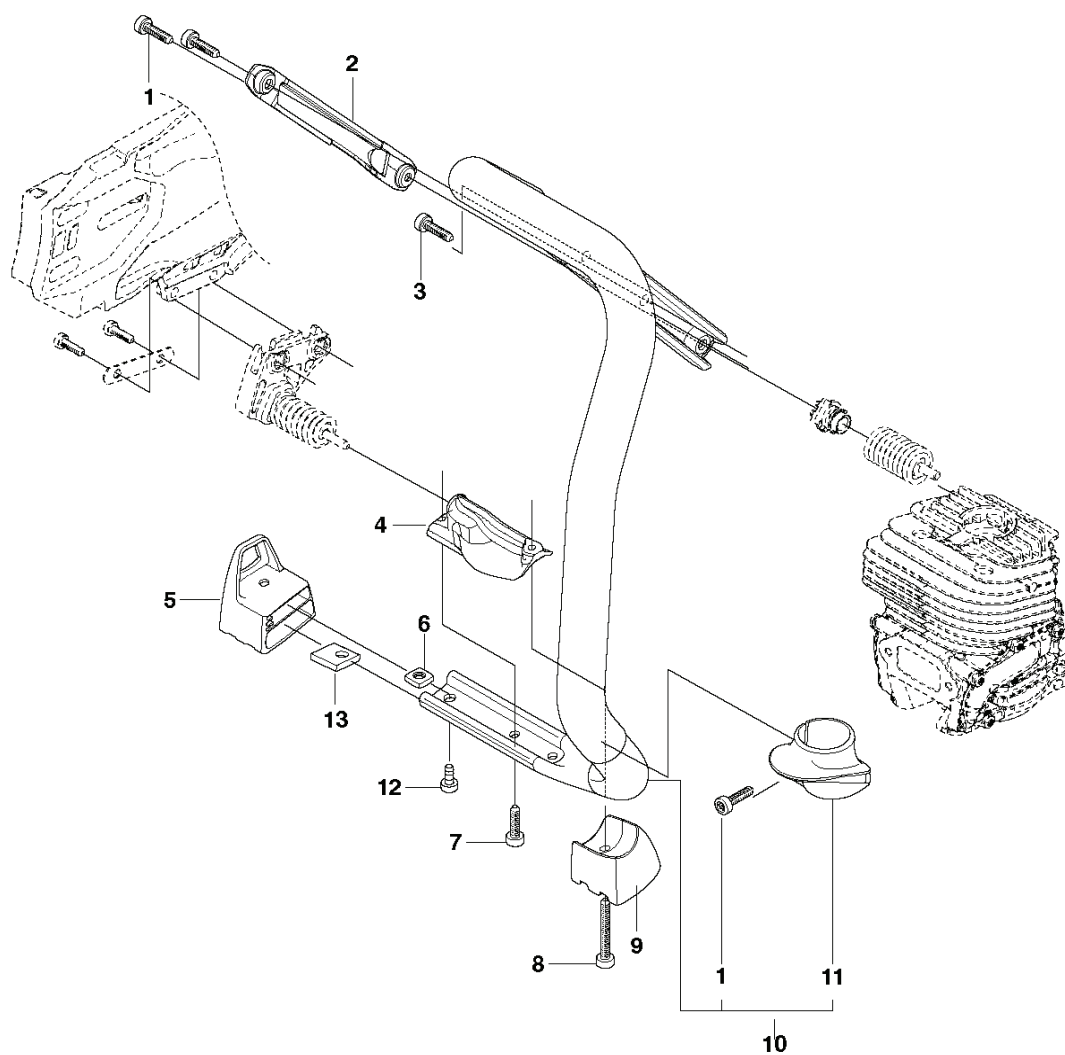


10

PXM_REF	PXM_PARTNO	DESCRIPTION	PXM_REMARK	QTY.
1	506382601	TOOL		1
2	581357402	GASKET KIT	Incl. 3-8, 11-12	1
3	588932501	GASKET		1
4	506377003	GASKET		1
5	544219302	INSERT		1
6	503260204	SEALING RING	Blue	2
7	581285301	GASKET		1
8	506376804	GASKET		1
9	502233301	KIT	Incl. 10 Pins	1
10	502287004	SWITCH		1
11	506376701	GASKET		1
12	506377002	GASKET		1

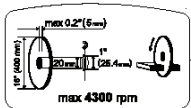


**K770**  
**GROUND SUPPORT**



PXM_REF	PXM_PARTNO	DESCRIPTION	PXM_REMARK	QTY.
1	503215420	SCREW ITXSCT		3
2	577981602	HOSE GUARD		1
3	544061201	SCREW ITXSCM		1
4	575267703	SPRING RETAINER		1
5	522832301	GROUND SUPPORT		1
6	503226504	SQUARE NUT		1
7	503215310	SCREW ITXSCM		3
8	503215340	SCREW ITXSCM		1
9	522832401	GROUND SUPPORT		1
10	581110603	HANDLE ASSY	Incl 1.11	1
11	506387102	STOP		1
12	503215312	SCREW ITXSCM	12"	1
13	593876301	WEIGHT	12"	1

# B



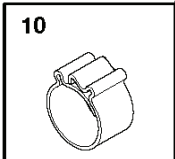
**△ 取り扱い上のご注意 △**

- 商品として販売された「バス・ターナ・カ・ソナー」に対しては、販売されたこと以外についてはお答えできません。販売元は、作業員から直接お答えください。
- 使用後は、フレートをとったまま、保管し、次の使用のためにください。
- 本フレートカードでは、取り扱いの異なる各型を区別した上で掲載しています。

PXM_REF	PXM_PARTNO	DESCRIPTION	PXM_REMARK	QTY.	
1	581351907	WHEEL GUARD	14"	1	2, 3, 4, 5, 6, 16, 17
1	581351903	WHEEL GUARD	12"	1	2, 3, 4, 5, 6, 16, 17
2	504909414	SCREW ITXSCT		2	
3	578190901	HANDLE HALF		1	
4	578760901	HANDLE HALF		1	
5	504909410	SCREW ITXSCT		1	
6	581620301	STOP		1	
7	584437701	DISC		1	
8	584438301	SUPPORT FLANGE		1	
9	583874402	FLANGE	Diam 105mm	2	
9	506070902	FLANGE WASHER	Diam 119mm, Japan 14"	2	
10	578398201	BUSHING	Diam 20/25, 4mm	1	
10	581605403	BUSHING	Diam 30, 5 mm	1	
10	506379620	KIT	Diam 20 mm	1	
10	506379622	BUSHING	Diam 22, 2 mm	1	
11	590503801	SCREW		1	
12	544218430	SCREW ITXSCT		4	
13	584438201	SLEEVE	12", Shiny	4	
13	584438202	SLEEVE	14", Black	4	
14	584438101	SPRING		4	
15	584437801	SHIM		2	
17	584438001	LINING		1	
16	584437901	LINING		1	
18	581117705	DECAL	12"	1	
18	581117706	DECAL	14"	1	
19	584992601	DECAL	12"	1	
19	584992602	DECAL	14"	1	
20	582233101	WASHER		4	
21	582233201	WASHER		4	
18	581117704	DECAL		1	

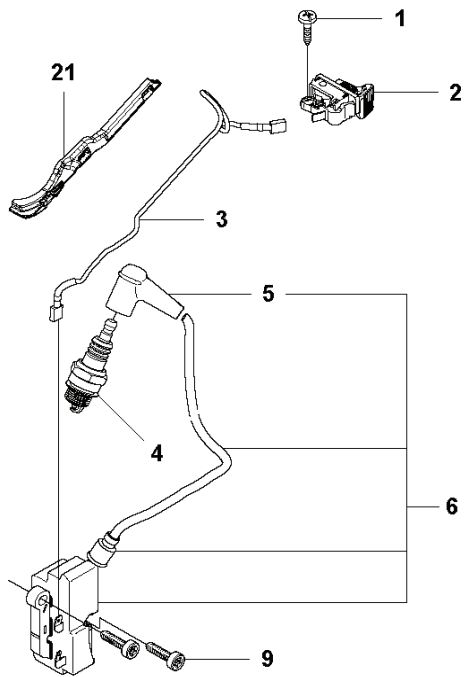
**P**

Diagram of a beam with a central support and a load  $P$ . The distance from the support to the load is labeled  $A, B \text{ mm}$ .

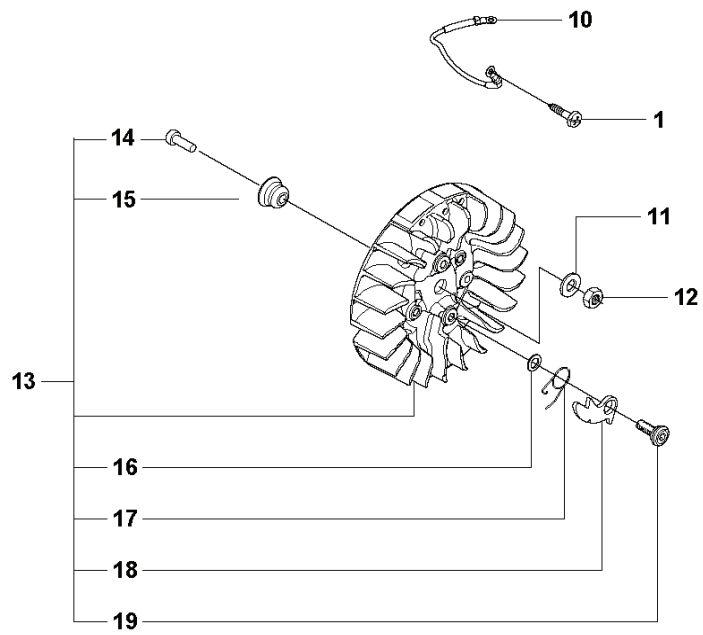
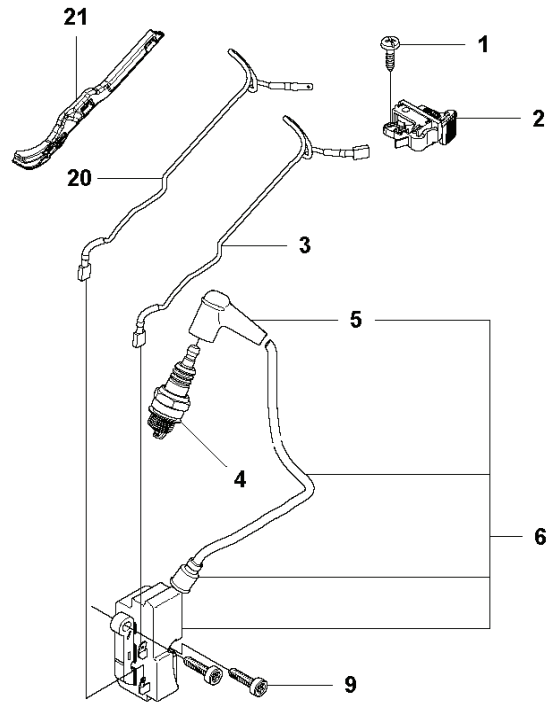


PXM_REF	PXM_PARTNO	DESCRIPTION	PXM_REMARK	QTY.
1	581476212	HOSE KIT	Incl. 2, 5 - 7 & Hose Guard	1
2	581478302	NIPPLE	Incl. 3, 4	1
3	506298801	FILTER		1
4	505103501	O-RING		1
5	589638601	HOSE CLAMP		2
6	578198101	HOSE		1
7	578243302	VALVE ASSY	Incl. 8, 18, 19	1
8	503215341	SCREW ITXSCM		1
9	581721504	HOSE KIT	Incl. 10 - 16	1
10	506498704	HOSE CLAMP		3
11	578198305	HOSE	800 mm	1
12	504634602	SCREW ITXSCM		2
13	578190701	HOUSING		1
14	576798403	NIPPLE		2
15	578190801	HOUSING		1
16	583833001	HOSE CLAMP		1
17	503266003	COUPLER	USA, Canada	1
17	503266004	COUPLER		1
19	503226504	SQUARE NUT		1
18	581357001	LEVER ASSY	With O-rings	1

**M** K770  
IGNITION SYSTEM



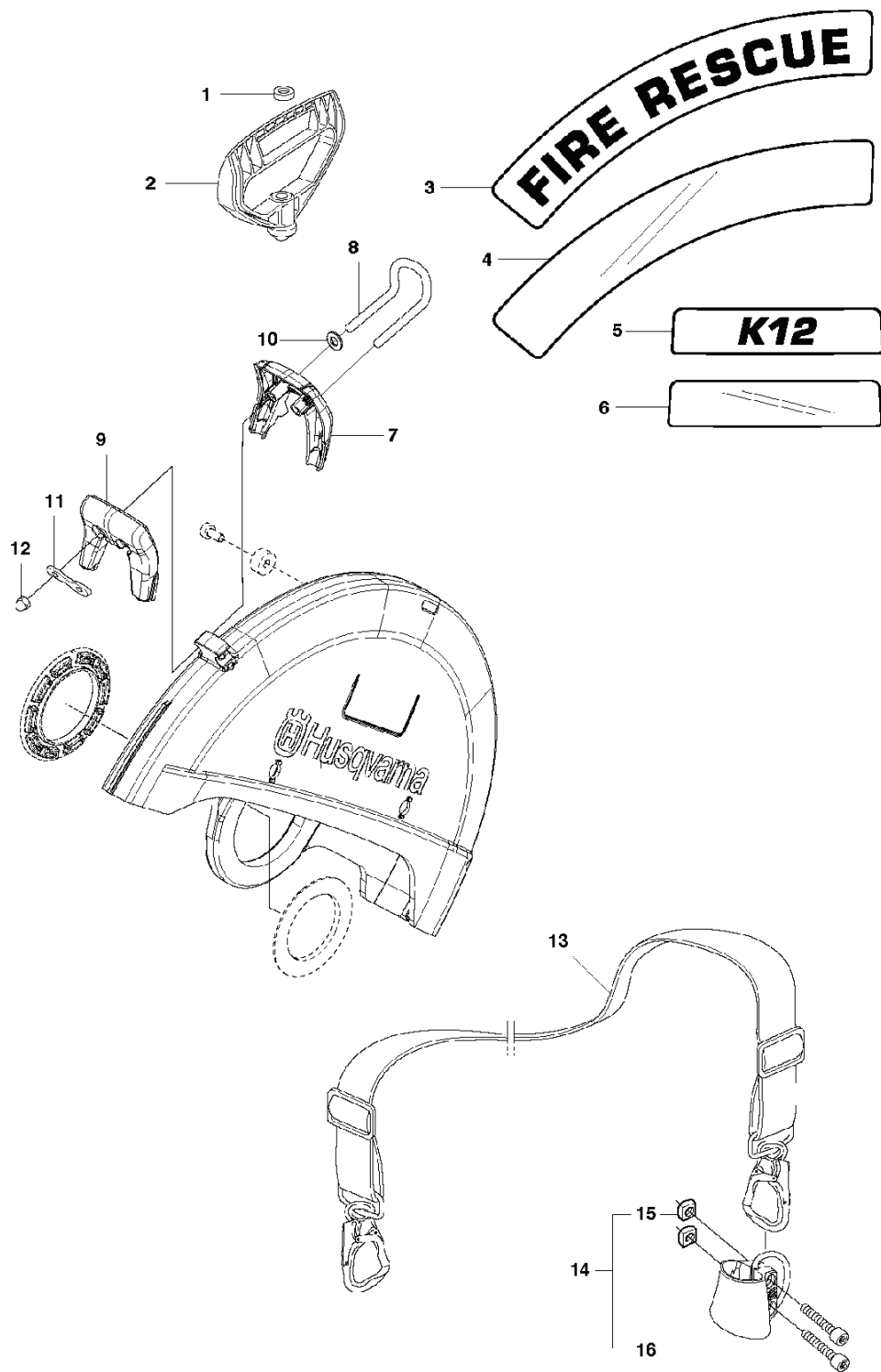
K770 Oil Guard



PXM_REF	PXM_PARTNO	DESCRIPTION	PXM_REMARK	QTY.
1	525887402	SCREW CITXPANT		2
2	506318604	STOP SWITCH		1
3	586497201	CABLE		1
4	503235111	SPARK PLUG	RCJ 6 Y	1
5	590504501	SPARK PLUG CAP		1
6	594729601	IGNITION MODULE ASSY	Incl. 5	1
6	580380505	IGNITION MODULE	Incl. 5, 7 - 8 (Oil Guard)	1
9	505574120	SCREW ITXSCM		2
10	506378501	CABLE		1
11	503230101	WASHER		1
12	503221011	HEXAGON NUT	Incl. 14 - 19	1
13	587702102	FLYWHEEL ASSY		1
14	725532956	SCREW IHSCM		1
15	574250901	WEIGHT		1
16	503230042	WASHER		2
17	576492601	SPRING		2
18	501673203	PAWL		2
19	506006901	SCREW		2
20	544384901	CABLE	Oil Guard	1
21	577242801	CABLE HOLDER		1

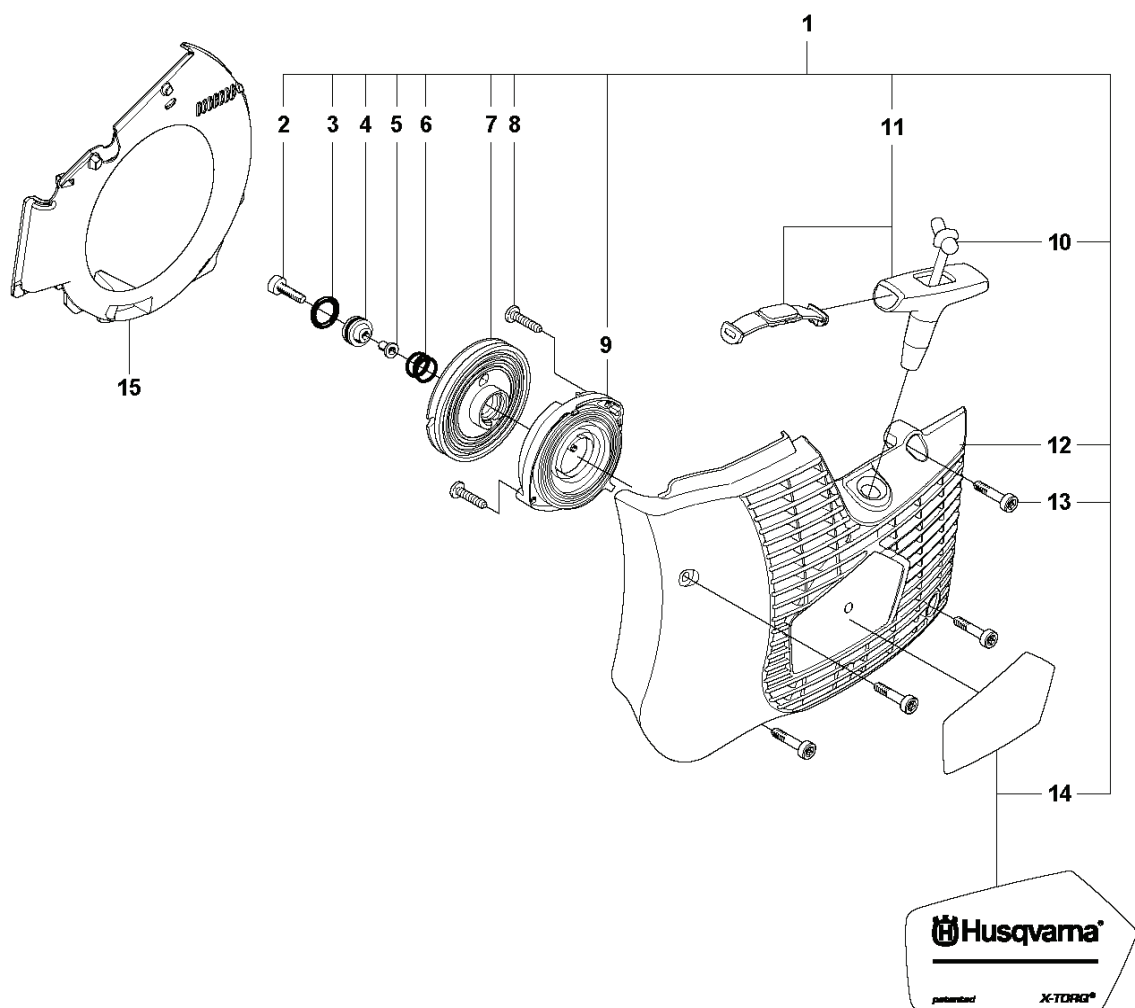


**Q** K770  
RESCUE



PXM_REF	PXM_PARTNO	DESCRIPTION	PXM_REMARK	QTY.
1	503142902	WASHER		1
2	506297502	STARTER HANDLE		1
3	593223201	DECAL	12"	2
3	588987401	DECAL	14"	1
4	593223401	DECAL	12"	1
4	588987501	DECAL	14"	1
5	588987602	DECAL		1
6	588987601	DECAL		1
7	578760902	HANDLE HALF		1
8	588754601	ROD		1
9	578190901	HANDLE HALF		1
10	576294001	WASHER		1
11	588754701	HANDLE BRACKET		1
12	588908101	NUT CAP		2
13	586456001	SHOULDER STRAP		1
14	588731401	BRACKET		1
15	503226504	SQUARE NUT		2
16	503215316	SCREW ITXSCM		2

**N** K770  
STARTER



PXM_REF	PXM_PARTNO	DESCRIPTION	PXM_REMARK	QTY.
1	584886805	STARTER ASSY	Incl. 2-14	1
2	510269222	SCREW ITXSCT		1
3	740431300	O-RING		1
4	510000801	SEALING		1
5	506263101	SPACING SLEEVE		1
6	506253001	COMPRESSION SPRING		1
7	588155801	STARTER PULLEY		1
8	525887402	SCREW CITXPANT		2
9	596293101	RECOIL SPRING		1
10	506335615	CORD		1
10	506335650	STARTER ROPE	50 m	1
11	584257902	STARTER HANDLE ASSY		1
12	525446001	STARTER COVER		1
13	501981020	SCREW ITXSCM		4
14	525571101	DECAL		1
15	501859401	COOLING AIR CONDUCTOR		1